

Volume 18, Issue 3

March 13, 2010



Plane News

Woodworkers of Central Ohio

From The President - Chuck Caranna



As I look out on 18 inches of snow its difficult to believe the March meeting is only a little more than 3 weeks away. Our guest speaker will be someone well known to all of us. Ron Damon owner of Woodwerks will be discussing the current trends in power tools and what the future holds. This subject should be informative and interesting to all of us.

On the agenda for this meeting will be a vote on the revised constitution and by-laws. As I have said before this is the first time in 19 years this subject has been addressed.

Mike Quinn has spent a good deal of time crafting the new document which is designed to spell out the club mission and the committee activities in an efficient manner. We will still be the same club but with our officer and committee duties more clearly defined and transparent to the general membership.

Just recently I was notified of the passing of Art Eberle husband of long time member Betty Eberle. I understand this occurred in late 2009 and apologize for not extending my personal and the club condolences sooner. Please call or email me if you become aware of a member or members spouse passing so that as a club we may extend condolences.

Finally save the date of May 4, 2010. Its road trip time and this year we are heading to Union City, Indiana as guests of the Frank Miller Lumber Co. Frank Miller Lumber is one of the largest lumber and millwork suppliers in the Midwest. They will take us on a tour of their vast operation including the millwork fabrication and yard. This is a rare opportunity to see how a really big lumber yard works. There will also be an opportunity to purchase lumber and sheet goods that day at special pricing. More details will be coming and a sign up sheet will be passed at the March meeting so we can gauge club interest.

In the meantime stay safe and continue to make a lot of sawdust. Looking forward to seeing your latest projects on the show and tell table in March.

Chuck Caranna

2009/2010 Arthritis Foundation Chair Riser Program

Delaware Group Including :

Marion Ackerman, Joe Goodwin

Mike McIntee, Dan McIver

Tom Quertinmont, Steve Sattler

Dan Strohecker &

Don Wenzlik -----75 Sets

Ivan Dangler ----- 54 "

Jim Walters -----20 "

Robert Engle -----8 "

Leon Gage -----12 "

George Whited -----13"

John Fair ----- 1 "

Lou Gatch ----- 5 "

Larry Smith -----2 "

Ben Bennett ----- 2 "

Ed Razler ----- 4 "

John Rushmeyer ----- 3 "

Henry Fisher ----- 2 "

John Thill-----10 "

North Side Dusters ? ----- 12"

Total to date (1/23/10)--- 223 "

Lou Gatch



Great start for the new year.

Please fill out the tally sheet at the entrance of the mtg. room to insure credit for your effort.

Continue to pack and **TIE** each set of four in a plastic grocery bag to insure each sets integrity.

A 3 1/8" dia. Forstner drill bit is available for member use in lieu of routing the pocket. Call me to check availability.

Please contact me if I omitted, have an error, or failed to give tickets to each contributor.

Thank you

MARK YOUR CALENDER Meetings begin at 8:30 a.m.

March 13 – Tools and Trends. Our own Ron Damon will provide his unique commentary on tools, trends and tips for woodworking. Put this presentation by a woodworker and owner of Wood Werks at the top of your list.

May 8 – Lathe Techniques and Demonstrations. Don't miss Walt Betley and the Central Ohio Woodturners demonstrating tools and techniques for turning wood.



HOLIDAY TOY PROGRAM NEWSLETTER ARTICLE MARCH, 2010

The Holiday Toy Program for 2009 was a very successful one. The final tally of toys donated was 1690, which is the highest total in recent memory. At least as significant as the number of toys donated was the number of members who participated in 2009, either working alone or in groups. We had 59 people make toys this year, a substantial increase over the last several years.

One of the reasons for the increased participation and the large number of toys was the activities of the toy making groups. We had at least 7 groups get together during 2009 and we'd like to do the same this year. Working together in a toy making group not only helps the Club fulfill its mission of community service but provides a great opportunity to interact with other Club members on a more personal basis and to learn new woodworking skills – like how to cut small parts while keeping all your fingers! If you would like to lead a group or participate in a group this year please contact me at mikequinn@columbus.rr.com.

Following is a listing of those who participated in the Toy Program for 2009. A sincere thank you to everyone for your generosity and creativity. Your efforts are greatly appreciated by the agencies we serve and the children who receive the toys.

Marion Ackerman	John Herrel	Keith Rogers
Chris Amatos	David Loy	David Rouse
Ben Bennett	J.D. Lynn	Steve Sattler
Gary Bogart	Phil Lynn	Jim Shaffer
Jim Bossenbroek	Ron Mack	Ed Shaffer
Jim Breakmeyer	Dave Madison	Mike Simpson
Chuck Carrana	Mike McIntee	Larry Smith
Jack Chenoweth	Dan McIver	Lou Spezialetti
Vic Colley	Nelson Meyer	Dan Stroehecker
Gordon Correia	Bill Miller	John Thill
Wayne Cuthbert	Bob Morrison	Mike Totsch
Ivan Dangler	Chuck Murray	Jim Walters
Joel Douglas	Daryle Oakes	Rosie Wendt
Robert Engle	Larry O'Flynn	Don Wenzlik
John Fair	Jim Orahod	George Whited
Henry Fisher	Ross Petitto	Dave Wohlwend
Leon Gage	Tom Quertinmon	Joe Yusko
Lou Gatch	Mike Quinn	
Joe Goodwin	Ed Razler	
Peter Grace	Ed Robold	
Ron Grady		
Chuck Grimes		

Mike Quinn

workbench[®] weekly eTip

MY HOME MY STYLE



Construction adhesive will hold just about anything, but sometimes it doesn't form a strong bond right away. If you need to speed up the adhesion process, the folks at Liquid Nails suggest you try the "venting" method: After gluing the two items together, pull them apart for one minute, and then press them firmly together again. The bond should now be good and tight between them.

Have a nice weekend,

ON THE WEB AGAIN

<http://www.woodcraft.com>

www.oplates.com/index.asp

<http://www.burlsource.com/>

<http://www.pennstateind.com/>

<http://www.bealltool.com/>

<http://www.toymakerpress.com/>

http://www.unitconversion.org/unit_converter/length.html

<http://www.sfwg.org/>

<http://pacificwoodworkersguild.com/>

<http://scientificsonline.com/>

<http://www.oldfortyfives.com/thoseoldwesterns.htm>

<http://www.buckeyetraffic.org/>

<http://ci.columbus.oh.us/>

<http://vote.franklincountyohio.gov/>

<http://www.dispatch.com/live/content/index.html>

<http://www.ohiostatebuckeyes.com/>

Fine Woodworking Project & Supplies at
Woodcraft

Renew Your Car Tags online

Bad Dogs Burl Source Burls and Burl Wood

Penn State Industries | Pen Turning | Pen Kits |
Dust Collector

The Beall Tool Company

Toymaker press & Toy Planes

Distance and Length Conversion -
FREE Unit Converter

Woodworking Guild of South Florida

Pacific Woodworkers Guild Homepage

Edmund Scientific: educational toys, gifts, &
science equipment

Those Old Westerns

Buckeye Traffic

Welcome to City of Columbus Web Site

Franklin County Board of Elections

The Columbus Dispatch

Football - News - The Ohio State Buckeyes Offi
cial Athletics Site - OhioStateBuckeyes.com

CREATIVE ARTS COMPETITION OHIO STATE FAIR

At the November meeting of WOCO Ms. Delilah Hetterscheidt, Creative Arts Director of the Ohio State Fair spoke to us about the Creative Arts Competitions and mentioned that she'd like to revitalize the Woodworking category with more entries. There are eight competition categories in Woodworking: 1.) Inlay wood item, 2.) Small wood item (i.e. bird house, jewelry box, toy, shelf, clock, etc.), 3.) Small furniture (i.e. chair, stool, etc. not to exceed 4'3" wide x 5'), 4.) Turned wood item, 5.) Wood carving (other than decoys), 6.) Intarsia, 7.) Scroll saw, 8.) Pyrography (wood burning).

There is a small entry fee and prizes for the winners. All the details and entry forms will be available on the Fair website (www.ohiostatefair.com) after April. Click on Competitions, then Creative Arts. There will also be information sheets available at the March and May meetings of WOCO. Deadline to register for the competition is June 20.

This is a great opportunity to show everyone how talented you are and to bring a little publicity to our Club!

The latest (2010) version of the 1993 WOCO Resource Directory has now been posted to the WOCO members website by Santana Lahiri. Chuck Caranna announced this during last Saturday's WOCO meeting in Westerville.

A new, more up-to-date and now electronic version of the 1993 WOCO Resource Directory has been compiled by the WOCO Delaware sub-chapter and is now available for all members to use. It has been posted to the Members Only section of the WOCO web site. You will note it contains a lot of information for woodworkers to use and is designed to be of assistance to all members, be they novices or professionals.

This is a living document that needs to be kept updated. Please help keep it as complete and helpful as possible by sending your suggested additions, modifications, changes or corrections to Joe Kunzman at JKunzman@Yahoo.com at any time. Joe will manage all input for the club.

May we suggest you take a minute to review this new (electronic) resource. No matter if you're looking for a new tool or a specific type of woodworking school, where to get your carbide saw blades or router bits sharpened, or need a source for a specific native or exotic wood, you'll find help in this directory!

A tip of the WOCO hat to all those who helped get this project off the ground and to all members who will help keep it up-to-date for the benefit of all WOCO members!

Steve Sattler
Delaware
740.363.8018



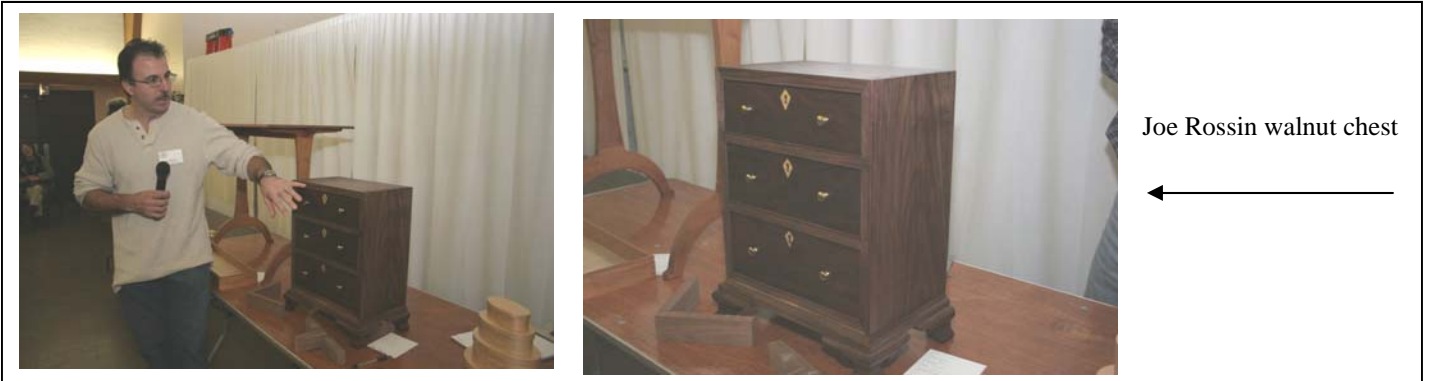
David Huffman Scrollsaw



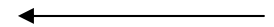
Don Reuter Shaker Table.



Ed Shaffer Boxes.



Joe Rossin walnut chest



John Herrel Shaker Box's



Dan Strohecker



Glen Huey Speaker

Tom and Bob are framing a house, Bob notices Tom throwing away about every second nail,

" What are you doing?" he asks.

" The heads are on the wrong end," Tom replies.

" You idiot, save them for the other side," Bob retorts

Buyer beware!!

Recently I uncapped a brand new bottle of Elmer's White Glue to assemble one of my "treasures" As the glue was applied to the joint parts it had the consistency of skim milk and certainly not the familiar thickness we are all used to. Needless to say this was not the glue of choice for this project.

On waste stock I squeezed out the remainder of the bottle. About 2/3 of the way down it became too thick to use. I took a look at the label and found that it was manufactured in China. Should I be surprised from the country that has given us tainted pet food, toys with lead based paint, and severely substandard generic drugs? I spent some time in the adhesive area at a big box store and what I found out is that all Elmer's glue (remember Borden's?) is now manufactured in China along with with several other brands of epoxies, urea glues and cyanoacrylates.

The only three companies that I observed that are totally USA manufactured are Titebond (Franklin Industries) made right here in our hometown, Weldwood glues and Loctite.

While this may have been a onetime occurrence I would recommend taking a closer look the next time you purchase glue.

Chuck Caranna

“New Yankee.” first episode (#101 from 1988) is available now for online viewing



In October of last year, we learned that after 21 seasons, “The New Yankee Workshop” was closing up shop and at the time, Russ Morash, executive producer and director of the show, told Editor Christopher Schwarz that he foresaw an online future for “New Yankee.” That future has come to pass.

The first episode (#101 from 1988) is available now for online viewing. The “New Yankee” site says the web episodes are an experiment, and that if there’s enough positive feedback, a different episode will be available every week.

It’s a bit of a time warp to go back 21 years and watch this first episode; there’s no gray in Abram’s beard, and there’s no wide-belt sander. In fact, the shop isn’t tricked out at all; the tools are what might be found in any decent 20-year-old woodshop – a table saw, a drill press and what looks to be a Craftsman radial arm saw (man does that thing scare me). And Abram is wearing a short-sleeved blue windowpane plaid shirt, not his signature red. Oh – and there’s not one mention of safety glasses.

But what I found most interesting was that the show opens with a visit to the Hancock Shaker Village in Pittsfield, Mass., from where Abram says he’s taking his inspiration, but the project looks decidedly non-Shaker and (if I’m being honest here) a bit generic. It’s a finger-jointed oak medicine cabinet with a plywood back, screwed-together half-lap face frame and a mirrored door attached with a brass piano hinge. Now, there’s nothing wrong with the project, mind you; it just doesn’t look Shaker. It’s a simple project that anyone with basic skills and a few pieces of machinery could build.

I kinda love that – because I didn’t start watching “The New Yankee Workshop” until about five years ago, and the projects Abram was building then were often decidedly more advanced and period authentic – his Windsor chair, for example, from season 16. But this first episode shows me that Abram’s talents and stylistic influences progressed along with the show, and perhaps along with his viewers (though it’s arguable his workshop became a bit more tricked out than most). Though he was certainly an accomplished carpenter when the show began, Abram’s work in later episodes was decidedly that of a craftsman.

I want the episodes to keep coming, and I posted a message to let them know (there’s a link on the show’s home page to do so). I hope you can take a minute to do the same (and perhaps 25 or so minutes to watch that first show).

megan.fitzpatrick@fwmedia.com

A woodworker had a neighbor that always borrowed his tools and never returned them, one day frustrated with this he phoned him.

" Could I put my table saw and drill press in your garage?" he inquired.

" Sure," his neighbor replied, " But why?"

" Just to have all my tools in one place." he retorted.

WOCO Delaware sub-chapter NEWS!

On February the 13th WOCO's Delaware sub-chapter met at the Sunbury home of member Marion Ackerman. There were 11 of us in attendance (and anyone who missed it missed a great get together!).

Marion lives in a house that was built in Connecticut before the Revolutionary War! He and his wife Connie discovered it was going to be torn down to make room for a parking lot so together they took all the measurements, had all the pieces marked for identification, and loaded it into a box car for delivery to Sunbury. Upon arrival he (with the help of some friends) built it back into a house (on a new foundation of course and complete with 5 fireplaces made from the original bricks)) and have lived in it for many years. Although they have added a sun room and electricity and running water and an indoor bathroom it stands a remarkable tribute to the accomplishment of a determined woodworker! We were given tours, coffee, cookies, and a lot of other treats, making the morning an even more memorable one!

We discussed the status of the new Resource Directory (on line but not announced to all the WOCO members as yet). Also, the WOCO web site was down yesterday. Steve will investigate the status of both.

Mike Quinn reminded us we will be voting on the revised WOCO Constitution at the next regular WOCO meeting on March the 13th in Westerville. He also discussed a few of the comments made during the last (January) WOCO meeting concerning the reasons for suggested changes.

Dan Strohecker told us he needs to know how many of what size wheels and axles he needs to order for this year's toy projects. He will be placing his order with Rockler in about a month and this order will be sent to us free of charge. If we need additional quantities or sizes we have to pay for them so please let Dan know what you'll need right away so he may include them in the "free" order. We also passed around some plans from Cherry Tree, several toy plan books, and even a moose of a toy truck (made by Mike Quinn). Steve agreed to write to Cherry Tree and ask permission to make multiple copies of some plans he brought (they are copyrighted) should anyone want one to build one of them for the toy program. Dan informed us we will begin toy building sessions in his shop during April (when it gets warmer). Ditto re the projects done at Jack Chenoweth's shop. Chuck said his group usually meets on a Saturday instead of Thursdays as we do. He will copy me on his work announcements and I will forward them out to everyone so those who so wish may participate in addition to or in lieu of the ones at Dan's.

Marion passed around samples of pear wood (!) and some white cedar from the northwest. Steve passed around a number of samples of US and foreign grown wood. We learned that there is a fellow who sells many types of wood remnants every Friday at a permanent flea market in Trail, Ohio. I couldn't find Trail on a map so perhaps someone could send me an address or directions. Perhaps it is near Dover, home of Warthers Carving Museum. If you haven't been to Warthers take a look at their web site (www.warthers.com) and if you're like me you'll be on your way!

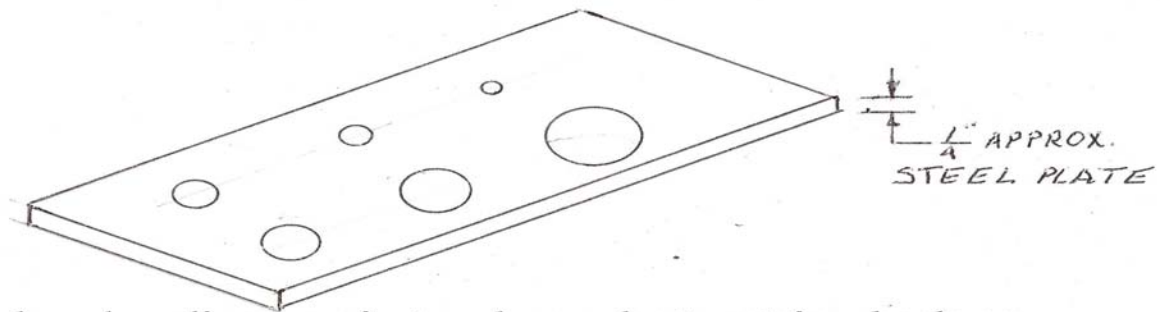
We finished up our meeting with a tour of Marion's basement shop. He has quite a collection of different woods (some of which are for sale or give-away) and a nice collection of all the tools necessary to practice our craft. He showed us three different spice cabinets he is making now. Beautiful! He and Joe Kunzman discussed building a Bombay dresser (off a pattern from Fine Woodworking magazine). Wow! A beautiful piece of work, but one which each of them agreed would be so demanding as to prohibit ever making more than one of!! Hopefully they'll keep us abreast of their progress.

Please mark your calendar: Mike Quinn volunteered to host our next meeting (Saturday, April the 10th at 9 AM). He also informed us he is building a new home and if he sells this one and has to be out before April 10th he'll let us know we'll need a different venue!

Thanks again for the good turnout and especially thanks to Marion and Connie for being such great hosts!

Steve Sattler
740.363.8018

DOWEL SIZER & GAGE



Most often when doweling a project such as axles to retain wheels or any doweling needs, we find the standard drilled hole is too small for a proper fit for glueing. Most dowels found at the store are oversize or out of round unless you buy premium sized dowels, even then may be too tight for the hole with glue. I have used this method for years to size a dowel after cutting it to length.

Take a piece of mild steel and drill the nominal size holes through it with a high speed drill bit for the most frequently used dowel sizes. Leave the burr at the exit end of the hole.

Take your cut to length dowel, and drive it thru the proper hole in the steel. You may have to flip the steel and drive the dowel thru the burr side of the steel a second time to get the proper fit. If the fit is still too tight Take a ball end of a ball peen hammer or ball bearing larger than the hole and lightly peen the burr side of the steel hole to reduce its diameter. This tool can also be used ,as a quick check, to gage the diameters when purchasing dowels.

Lou Gatch

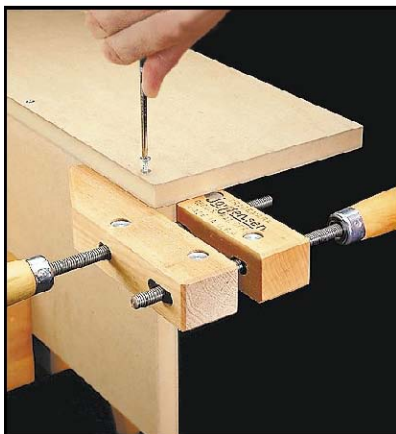
ANNUAL CD COLLECTION VOL 1
WoodworkingTips.com

Drilling & Setting Screws



I often use medium-density fiberboard (MDF) for my shop jigs and fixtures. There are many things I like about MDF. It's stable, heavy and costs about half as much as cabinet-grade plywood.

One thing I don't like about MDF is its tendency to split along the edge of a workpiece. But, luckily, there are a couple of things you can do to avoid this problem. MDF tends to split most often when drilling and screwing in its edge, especially when using a tapered woodscrew, see left screw in photo above. It acts like a wedge to drive the workpiece apart. So I've gotten into the habit of using a straight-shanked screw, right above. However, a straight-shanked screw isn't a cure-all. Even when using a pilot hole and the right screw, MDF can still split out. So one final precaution is to support the sides by clamping an ordinary handscrew across the workpiece, see the photo. It makes it almost impossible to split the MDF.



Try these two tips the next time you're working with MDF and you shouldn't have any problems with splitting.

WOCO Treasurer's Report January 23, 2010

STATEMENT OF OPERATIONS

REVENUES

Membership Dues	3,340.00\$
Hat Sales	30.00\$

TOTAL REVENUES

3,370.00\$

Expenses

Audio Visual	66.25\$
Awards	167.51\$
Christmas Party	133.53\$
Copying	22.81\$
Insurance	253.00\$
Library Supplies	60.59\$
Meeting Refreshments	94.01\$
Office Supplies	58.26\$
Postage Expense	8.90\$
Speaker Fees	400.00\$
Toy Making Materials	101.95\$

TOTAL EXPENSES

1,435.17\$

ACTUAL CASH FLOW

Balance Forward from September 1, 2009	3,454.91\$
Add: Revenues	3,370.00\$
Subtract: Expenses	1,435.17\$

Balance On Hand as of January 23, 2010

5,389.74\$

Michael Ware

Bob had a lot of work ahead of him so decided to hire a part time helper.

" Your first job will be to sweep up the sawdust." he said handing him a broom.

" Look I'm practically a university graduate," the young man protested.

" No problem, I'll show you how," Bob replied.

BAND SAW
 BOLT CUTTER
 BRUSH
 BUFFER
 CALIPER
 CHALK
 CHISEL
 CLAMP
 COPING SAW
 CROWBAR
 DADO
 DIVIDER
 DRILL PRESS

FILE
 GRINDER
 HAMMER
 HAND SAW
 HEX KEY
 JIG SAW
 JOINTER
 KNIFE
 LATHE
 MALLET
 MITER BOX
 PLANE
 PLIER

POLISHER
 PROTRACTOR
 PRY BAR
 PUNCH
 RASP
 RATCHET
 ROUTER
 SANDER
 SAWHORSE
 SCREW-DRIVER
 SCROLL SAW
 SOCKETS

SPRAY GUN
 SQUARE
 STAPLE GUN
 STUD FINDER
 TABLE SAW
 TAPE MEASURE
 TAPS AND DIES
 TINSNIPS
 VISE
 WOOD RULE
 WRECKING BAR
 WRENCH

Tools

M C R O W B A R E M K T A B L E S A W
 R I W A S L L O R C S L W A S D N A H
 T E T H S U R B U S Q U A R E U E T R
 W E H E X K E Y S P N B L H G H I A R
 R A H S R F O D A D R A A Y C N S E T
 P E S C I B I A E C T O A N S P D A V
 L R D G T L O L M H E R T N D N P B H
 I E R N N A O X E I P E I R I S R C A
 E T I E I I R P P S O P S F A E A M M
 R U L E V R P T A E S T D N P C H W M
 E O L R E I G O T L A U D I T O T O E
 F R P O E L R R C P T D L S H E R O R
 F S R C O D E D L S I A K O C S E D R
 U T E F L D I E W E C P N C N R T R R
 B E S T N A G V S E H U I K E O N U A
 E L S A I U M R I I R N F E R H I L B
 T L S E N A L P O D V C E T W W O E Y
 R A B G N I K C E R W H S S O A J L R
 S M B O L T C U T T E R J I G S A W P

WOODCRAFT HAS SEVERAL INTERESTING EVENTS COMING UP THAT MANY WOCO MEMBERS MIGHT BE INTERESTED IN !!!

Archery Lovers !!!

Tom Turgeon Is Coming !!!

Master Bowyer Tom Turgeon Will Be Here

April 15, 16, 17 & 18

To Present

A Free Demonstration And Two Classes In The Areas Of Bowmaking.

This Is Something You Won't Want To Miss.

Tom Has Over 15 Years Of Applied Bowyer Teaching Experience And Has Taught Over 300 Students.

Please Check Our Website For Full Descriptions

www.woodcraft.com Go to stores/classes/details.

Registration Can Be Accomplished By Calling Us At The Store, 614-273-0488. We Take Payment At The Point Of Sign-up To reserve Your space.

We Look forward To Hearing From All Of You.

Thursday, April 15, 6pm – 9pm

Bow Making Demo With Tom Turgeon **FREE DEMO**

Friday April 16, 12PM – 7PM

&

Saturday, April 17, 9AM – 6PM

Bamboo Backed Long Bow Building Class **\$395**

Sunday, April 18, 9AM – 1PM

Bamboo Backed Long Bow Finishing Class

This Class Is Not Limited To Long Bows & Is Offered To Any Student

With A Wooden Project In Need Of A Professional Grade Finish **\$135**

ALSO PLEASE MARK YOUR CALENDARS NOW FOR WOODCRAFT'S

ANNUAL SHOP & SWAP MEET

SATURDAY, JUNE 19

10AM – 4PM

You Are All Invited To Participate.

Clean Out Your Shop & Bring Your Excess/Unneeded Woodworking Tools, Wood & Supplies To Woodcraft On June 19.

Join Fellow Woodworkers For A Fun Day Of Swapping, Trading & Selling.

FREE TABLESPACE WILL BE PROVIDED.

All That is Needed Are Willing Participants. Who Knows What "Treasures" You May Discover!?! Call Woodcraft At 614-273-0488 For Details. Only At Your Columbus Woodcraft Store!

JIM, RUBY & OUR WOODCRAFT STAFF

Over 200 Unique Wood Species
all 20% off*

*Acrylics not included

Wood Werks
PEN BLANK
SALE!



The Earlex HMLP Spray Station

- 2.0 mm stainless steel needle and fluid tip
- Viscosity cup
- Spray gun cleaning kit
- Detailed instructions.

Sale **\$269^{.00}**



Air Dried Lumber For Sale.

Cherry 5/4 \$3.50 bdft

Walnut 4/4 \$3.20 bdft

Oak 5/4 \$2.00 bdft

Brian Neeley

561 Snoko Hill Rd.

Lancaster, Ohio 43130

Home 740-653-0185 after 8 pm

Cell- 740-407-0920 any time

For sale

Excalibur router table insert, \$75.00

Charles Murray 614-837-6168

For Sale

Porter Cable Router Table \$75

Craftsman Lathe \$75

Craftsman 8" Table Saw \$50

108 issues of Fine Woodworking \$195

Brian Neeley 740-407-0920

Pat sends Mike to the lumberyard , "Need twenty 4 X 2's," he says to the yardman.

" Guess you mean 2 X 4's," he grins, " How long do you want them?"

" Dunno for sure, but it will be a while, he's building a garage."

For Sale, Lumber at low prices
Various Hard Woods. Call for info
16973 Kandel Road
Marysville, Ohio 43040

937-642-5428
Gene King

For sale

Delta/Rockwell 14" band saw. This saw is the multispeed model for wood or metal. Runs great but I would suggest a larger motor. \$550.00

Call Charles Murray
614-837-6168

I have a saw for sale.

It is a 7 month old Delta contractor saw (36-797). Two throat plates, Inline pulleys, trundel modification and link belt. Asking 475.00 Call Jeff at 614-315-9603.

Thanks Jeff

A Termite walked into a pub and asked,
"Where's the bar tender?"

The rotation of woodworking classes has begun again. We've already had our wood identification and hand plane introduction (level 1) classes in February. The next few classes will be hand,dado,rebate,specialty,and simple molding planes (level 2) on Sat. March 13th 8am-noon. Hand and back saws identification, use, and sharpening on Sat. March 27th 8am-noon. Finally for those used to giving blood, Chisels, drawknives, and spokeshaves on Sat. April 17th 8am-noon. Sign-up sheets will still be passed around at the meetings. These dates are as firm as I can make them as business picks up, and are subject to change with prior notice. Classes are design as knowledge and skill building practicals. You should come expecting to learn, play, and to get dirty. Bring your own tools if you like to use, sharpen, adjust ,or just show and tell. See you all soon;

Ron Herman 614-332-7781

See something new in the newsletter you would like to be in each month. Let me know

Did you recognize the wood in the Plane News headline on the front page?
Had to go back and look. Didn't you? It's Birdseye Maple.

WOCO web site <http://www.wocoweb.com/>

Visit these retailers who support our club

Woodcraft 1077 Bethel Rd. Corner of
Bethel & Kenny Rds. Cols.
614 273-0488

**Wood works
& Rockler** 1181 Claycraft Rd. Columbus
614 575-2400

Woodline USA Router Bits
1-800-472-6950

Plane News is a publication of the
Woodworkers of Central Ohio
PO Box 3114
Westerville, Ohio 43086

Meetings are held the second Saturday of
September, November, January, March, and May.
8:30 am – 12:00 pm at Spring Road Church of Christ at 74
Spring Road, Westerville, Oh

President: Chuck Caranna (614) 457-3704
Vice President: : Edward Robold (614) 871-3171
Treasurer: Michael Ware (614) 523-1887
5693 Piermont Court
Westerville, Ohio 43082

WOCO & Other Meetings

WOCO meets

**March. 13, 2010. Spring Rd Church of Christ,
74 Spring Rd Westerville, Oh 8:30am – 12:00pm**

Wood turners

The Ohio State University Industrial Technology Bldg.
1100 Kinnear Road 7-9pm
Chuck Kemp 614-771-7861
Nancy Kerns 614-920-1184

Columbus Chippers Carving Club, meet 1st & 3rd
Tuesday of each month, meetings start at 7:00 p.m.

**Deadline for newsletter articles is the 15th of the month before
the next meeting.** Send newsletter articles to the editor.

cgrimes@columbus.rr.com

Chuck Grimes
159 Morse Rd.

Columbus, OH 43214

Phone: 614 268-8821

Cell 614 325-3350

If you would like to change the way you receive this newsletter,
email or hard copy mailed, please contact me and I will make
the change. Each mailed hard copy of the Newsletter costs the
club about a \$3.00.

One way to haul wood

